



## Comprehensive Guidelines and Time Frames for Your Evolution



What you need to know to assess where you are and how to migrate your FCWnx system to OnGuard.

### Migration Plan Overview

Lenel has developed Facility Commander Wnx (FCWnx) to OnGuard® migration plans and time frames based on your current version of FCWnx. To assist you in transitioning, a variety of useful tools have been created to streamline your move from FCWnx to OnGuard.

### Migration Tool Step 1: Cardholder Database Tool

The Cardholder Database Tool (implemented by the VAR) is a tool that converts a backup of the FCWnx 7.7 cardholder data into an OnGuard database. This automated tool compares certain prerequisites in both systems and auto-corrects OnGuard values accordingly. Upon completion, a summary message and report will advise the user that the migration has been completed. Certain limitations apply to the database size and scope. Contact your Lenel district sales manager for more details.



### Migration Tool Step 2: Hardware Migration (Coming Soon)

Step 2 of the Migration Tools will expand upon the database migration and include hardware definitions, permission groups and events.

## Migration Service Offerings

For customers running older versions of the FCWnx software (versions prior to FCWnx 7.7, Secure Perfect 3.1 – 6.1.1 or customers with legacy-Infographics systems, including Diamond, Diamond II and Sapphire), an alternative migration solution can be deployed utilizing the Lenel Advanced Services team. The Advanced Services team can provide:

**Cardholder Migration Service** – a utility that can be deployed on legacy, unsupported systems to migrate cardholder, photo, badge, access levels and access level assignments to OnGuard.

**Hardware Programming Service** – a service that programs the new OnGuard system hardware, including alarm inputs and outputs. Certain limitations will apply. Contact your Lenel district sales manager for more details.

## Getting Started: The Migration Worksheet

**Migration Worksheet** – Provides you a template to determine and enter your current system information, existing integrations, hardware/option boards, and micro panels. This worksheet allows you to see what you have and what you need, at a glance.

### Current System Information

- End user, strategic partner and auditor information
- Software information
- Auditing address and user fields

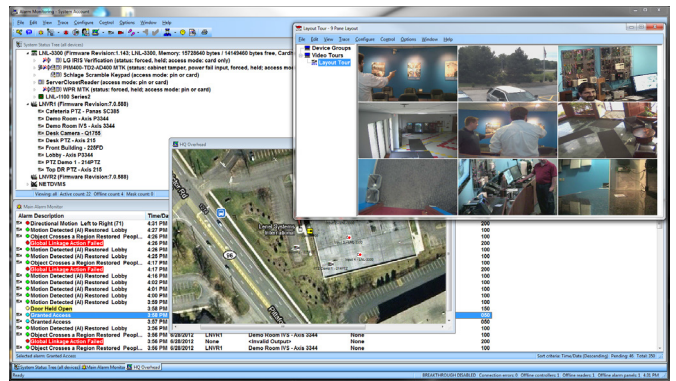
### Existing Integrations

- Video
- Third Party Interfaces
- Custom Integrations

### Hardware and Option Boards

- PX and PXN CPUs will not run OnGuard-compatible firmware
- Verify option board compatibility when upgrading to PXNplus
- OnGuard-compatible firmware will run on the Micro PXNplus CPU with a Type 2 or 3 SIMM card
- All Type 1 SIMM cards require replacement
- Type 3 SIMM cards with OnGuard-compatible firmware are available

## Start Moving Up to OnGuard NOW



## Complete the FCWnx to OnGuard Migration Worksheet

Determine what micro boards need to be replaced and document any software interfaces that may need to be modified for compatibility with OnGuard.

## Maintain your Software Service Agreement (SSA)

Ensure your Software Service Agreement (SSA) agreement is up-to-date, and remains current throughout the migration process. Customers with a valid FCWnx SSA will receive OnGuard software with equal license capacities free of charge. This does not include:

- 3rd party software including Windows OS, SQL DB, and Crystal Reports
- Server redundancy (requires 3rd party software)

## Upgrade to current version of FCWnx

Cardholder migration tools to OnGuard are compatible with v7.7.

## Upgrade to PXNplus hardware

PX, PXN and related option boards must be upgraded before cutover to OnGuard. With OnGuard firmware for PXNplus and DirecDoor™, your existing hardware investment is preserved. Upgrade micros to OnGuard via web-based firmware download or by switching to a SIMM with preloaded OnGuard firmware.

## Engage Lenel Custom Solutions or Professional Engineering Services (PES) where needed

Software interfaces are available to HR databases and other external systems. Smart planning is the key to a successful, streamlined migration.

## OnGuard Training to Get You Up to Speed

One of the great things about working with Lenel – thanks to our expertise with both FCWnx and OnGuard – is that we have been able to develop practical, easy-to-understand training for you and your operators. These programs illustrate how to implement many of the same functions in OnGuard that you utilized in FCWnx. You'll see configurations, understand terminology differences, and learn how to benefit from the feature-rich OnGuard environment and interface. There is also a full suite of advanced user classes that takes training to the next level and allows you to maximize all of the powerful aspects of OnGuard.

## Micro Panel Requirements and OnGuard-compatible Firmware

Micro panels connecting to an OnGuard server need to run OnGuard-compatible firmware. PXNplus and DirecDoor, with a Type 2 or 3 SIMM board, are required. In FCWnx, depending on your version, you may also have PX and PXN micros that must be updated before your final transition to OnGuard.

OnGuard-compatible firmware on micro controllers that will be utilized with OnGuard 6.6 will have almost all equivalent functionality to FCWnx micro-based features, with some exceptions. Features not included in the firmware:

1. Elevator Control
2. Guard Tour
3. Keypad Alarm Response
4. Input Delay

These features exist in OnGuard systems, but OnGuard-compatible firmware on micro controllers that is utilized with OnGuard 6.6 does not support them.

Elevator control will be supported in the OnGuard-compatible firmware that will be utilized in OnGuard 7.0.

## Lenel M Series

Lenel is now offering the Lenel M Series, an Access Control Hardware family, which facilitates customers migrating from Picture Perfect, Secure Perfect and FCWnx hardware. The Lenel M Series CPU Board, Reader Interface Boards, and I/O boards are plug-compatible to the legacy Micro Series boards, and allow a screwdriverless migration from legacy hardware to OnGuard compatible hardware.

[lenel.com/FCWnx](http://lenel.com/FCWnx)

(866) 788-5095

Specifications subject to change without notice.

© 2014 Lenel Systems International, Inc. All rights reserved. All other trademarks and copyrights are the property of their respective owners.

FC20G\_TS\_021214

